

# 东莞市安伏特电子有限公司

## DONGGUAN AMPFORT ELECTRONICS CO., LTD.

### ※公司简介 Company Introduction

本公司位于广东省东莞市石龙镇，是一家专业生产温度保险丝的高科技企业。

本公司自成立以来致力于温度保险丝的开发、生产、应用，产品通过了 CCC、VDE、TUV、UL、SGS 认证，质量体系通过了 ISO9000 认证。本公司拥有自主开发能力能按照客户要求开发客户所需的各种产品。目前公司的研发能力、生产控制、产品质量、质保能力已达到同行业先进水平。

本公司生产的 RH 温度保险丝，适用于电源变压器、电源开关、插座、整流器、健身按摩器、电热毯、节能灯、通讯工具等家用电器中，是保护电器产品安全、防止电器火灾不可缺少的安全配件。

本公司以“第一次就把工作做好”为原则，以交货快捷为主线，以合理的价格为竞争力，为广大厂商提供满意的产品和服务。

Our company is located in Shilong Town, Dongguan City, Guangdong Province. It is a high-tech enterprise specializing in the production of thermal fuses.

Since its establishment, the company has been committed to the development, production and application of thermal fuses. The products have passed CCC, VDE, TUV, UL, SGS certification, and the quality system has passed ISO9000 certification. The company has independent development capabilities and can develop various products required by customers in accordance with customer requirements. At present, the company's research and development capabilities, production control, product quality, and quality assurance capabilities have reached the advanced level in the same industry.

The RH temperature fuse produced by our company is suitable for power transformers, power switches, sockets, rectifiers, fitness massagers, electric blankets, energy-saving lamps, communication tools and other household appliances. It is an indispensable safety for protecting electrical products and preventing electrical fires. Accessories. To

The company adheres to the principle of "doing the job well the first time", with fast delivery as the main line, and reasonable price as the competitiveness, to provide manufacturers with satisfactory products and services.



### ※产品介绍 Product description

Y 系列温度保险丝介绍:温度保险丝由熔断导线和绝缘的外壳组成,主要用于电器和电子产品设备及其零部件中。它多用于室内的电气设备,主要是为了保护电器设备在不正常的条件下发生的过热,一旦要重置保险丝,就只能用同一类型号和规格的温度保险丝。

Y series thermal fuse introduction: thermal fuse is composed of fuse wire and insulated shell, mainly used in electrical and electronic product equipment and its parts. It is mostly used in indoor electrical equipment, mainly to protect electrical equipment from overheating under

# 东莞市安伏特电子有限公司

## DONGGUAN AMPFORT ELECTRONICS CO., LTD.

abnormal conditions. Once the fuse is to be reset, only the temperature fuse of the same type and specification can be used.

### ※产品工作原理 Working principle

当设备温度异常升高时，热熔断体感应受热，温度达到合金设定的温度时，低熔点合金融化，融化的合金在特殊树脂的作用下表面张力增强，使得合金收缩呈球状分别附在两条引线上，电路完全切断。

When the temperature of the equipment rises abnormally, the thermal fuse is induced to heat, and when the temperature reaches the set temperature of the alloy, the low melting point is melted, and the surface tension of the molten alloy increases under the action of the special resin, causing the alloy to shrink in a spherical shape. On the lead wire, the circuit is completely cut off.

### ※产品标识 Marking



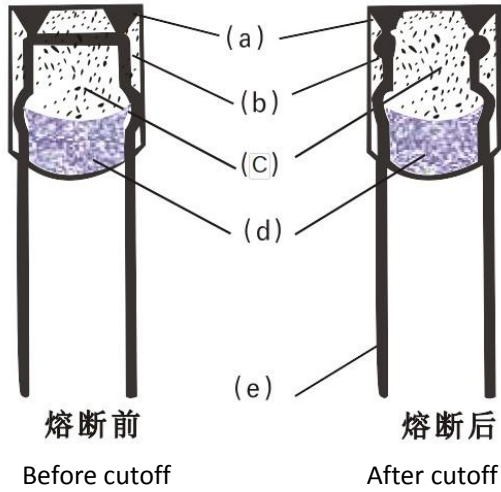
**JF** : 标志 Logo  
**UL** : 认证标志 Certification mark  
**Y35**: 型号 Model Number  
**130°C**: 额定温度 Rated temperature  
**2A**: 额定电流 Rated current  
**250V**: 额定电压 Rated voltage

### ※品质保证 Quality Assurance



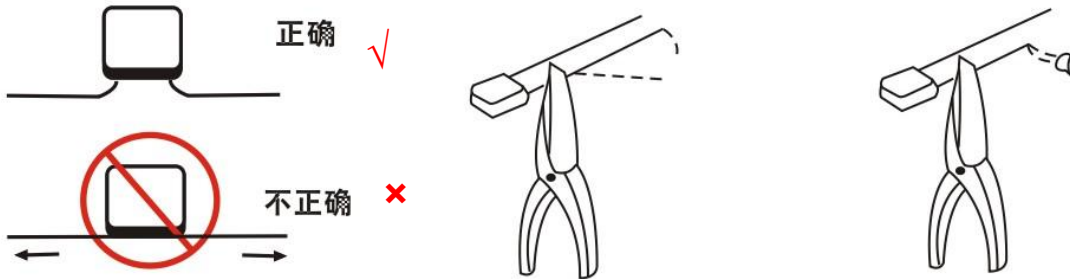
# 东莞市安伏特电子有限公司 DONGGUAN AMPFORT ELECTRONICS CO., LTD.

## ※产品剖析图 Anatomy Diagram



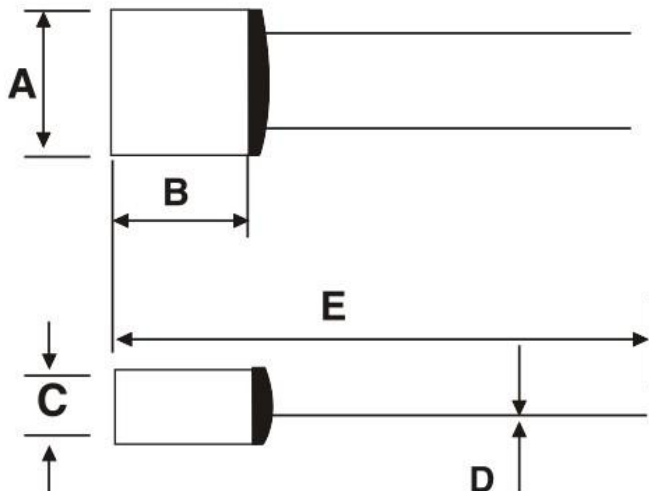
a	b	c	d	e
绝缘外套 Insulation Case	低熔点合 金 Low melting point alloy	特殊树脂 Special resin	封口树脂 Seal resin	铜引线 Tinned plated copper

## ※产品安装指引图 Product installation guidelines



- 在弯曲导线时应与保险丝本体保持 3mm 距离。Keep a distance of 3mm from the fuse body when bending the wire.
- 当焊接或者焊锡时在超过保险丝额定温度时，焊接距离越长和焊接时间越短对保险丝的伤害越小。When welding or soldering exceeds the rated temperature of the fuse, the longer the welding distance and the shorter the welding time, the less damage to the fuse.
- 要小心在保险丝上流动的电流。Be careful of the current flowing in the insurance body.
- 不要使用液体或有毒性多气体，如硫酸和氧化一氮。Do not use liquids or toxic gases such as sulfuric acid and nitric oxide.
- 不要将加热器和保险丝直接连接起来。Do not connect the heater and the fuse directly.

### 1. Y 系列 1A 250V 方壳



#### 1.1 尺寸 Dimension (mm)

A	B	C	D	E※
6.1±0.2	6.8±0.2	2.6±0.2	0.5±0.02	70±2
5.1±0.2	5.4±0.2	2.4±0.2	0.5±0.02	50±2
长度可按客户要求制作 Length can be customized on request				

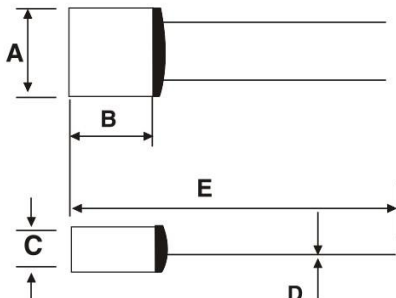
# 东莞市安伏特电子有限公司

## DONGGUAN AMPFORT ELECTRONICS CO., LTD.

### 1.2 电参数 Electrical Performances

型号 P/N	额定动作温度 Rated operating temperature Tf(°C)	实际动作温度 Actual operating temperature (°C)	保持温度 Hold temperature Tc(°C)	极限温度 Limit temperature Tm(°C)	额定电压 Rated Voltage (V)	额定电流 Rated Current (A)	分断电流 Breaking current (A)	限时过载电 流 Limited time overload current (A)
Y01	75	72±1	55	130	250	1	1.5	15
Y02	76	73±1	55	130	250	1	1.5	15
Y03	80	75±2	58	130	250	1	1.5	15
Y05	85	80±2	62	130	250	1	1.5	15
Y06	90	85±2	65	130	250	1	1.5	15
Y07	95	90±1	68	130	250	1	1.5	15
Y08	98	96±1	70	130	250	1	1.5	15
Y09	100	97±1	72	130	250	1	1.5	15
Y10	102	98±1	72	150	250	1	1.5	15
Y11	103	99±2	73	150	250	1	1.5	15
Y12	105	100±2	75	150	250	1	1.5	15
Y18	110	105±1	80	150	250	1	1.5	15
Y20	115	111±2	87	150	250	1	1.5	15
Y28	120	115±1	90	150	250	1	1.5	15
Y30	125	121±2	95	150	250	1	1.5	15
Y32	126	121±2	95	150	250	1	1.5	15
Y33	127	122±2	96	150	250	1	1.5	15
Y35	130	126±1	102	150	250	1	1.5	15
Y36	133	130±1	103	150	250	1	1.5	15
Y38	135	130±1	105	150	250	1	1.5	15
Y39	136	131±1	105	150	250	1	1.5	15
Y46	140	136±1	110	160	250	1	1.5	15
Y48	145	140±1	114	180	250	1	1.5	15
Y50	150	146±1	120	180	250	1	1.5	15

### 2. Y 系列 2A 250V 方壳



#### 2.1 尺寸 Dimension (mm)

A	B	C	D	E※
6.1±0.2	6.8±0.2	2.6±0.2	0.5±0.02	70±2
5.1±0.2	5.4±0.2	2.4±0.2	0.5±0.02	50±2
长度可按客户要求制作 Length can be customized on request				

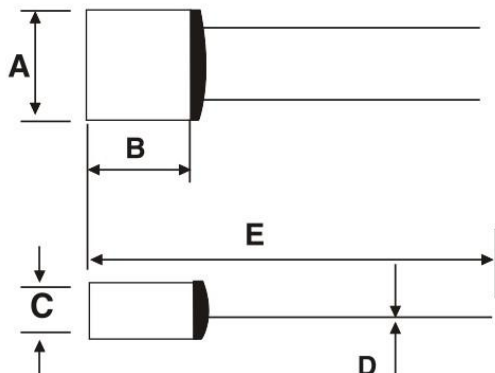
# 东莞市安伏特电子有限公司

## DONGGUAN AMPFORT ELECTRONICS CO., LTD.

### 2.2 电参数 Electrical Performances

型号 P/N	额定动作温度 Rated operating temperature Tf(°C)	实际动作温度 Actual operating temperature (°C)	保持温度 Hold temperature Tc(°C)	极限温度 Limit temperature Tm(°C)	额定电压 Rated Voltage (V)	额定电流 Rated Current (A)	分断电流 Breaking current (A)	限时过电流 Limited time overload current (A)
Y01	75	72±1	55	130	250	2	3	30
Y02	76	73±1	55	130	250	2	3	30
Y03	80	75±2	58	130	250	2	3	30
Y05	85	80±2	62	130	250	2	3	30
Y06	90	85±2	65	130	250	2	3	30
Y07	95	90±1	68	130	250	2	3	30
Y08	98	96±1	70	130	250	2	3	30
Y09	100	97±1	72	130	250	2	3	30
Y10	102	98±1	72	150	250	2	3	30
Y11	103	99±2	73	150	250	2	3	30
Y12	105	100±2	75	150	250	2	3	30
Y18	110	105±1	80	150	250	2	3	30
Y20	115	111±2	87	150	250	2	3	30
Y28	120	115±1	90	150	250	2	3	30
Y30	125	121±2	95	150	250	2	3	30
Y32	126	121±2	95	150	250	2	3	30
Y33	127	122±2	96	150	250	2	3	30
Y35	130	126±1	102	150	250	2	3	30
Y36	133	130±1	103	150	250	2	3	30
Y38	135	130±1	105	150	250	2	3	30
Y39	136	131±1	105	150	250	2	3	30
Y46	140	136±1	110	160	250	2	3	30
Y48	145	140±1	114	180	250	2	3	30
Y50	150	146±1	120	180	250	2	3	30

### 3. Y 系列 3A 250V 方壳



#### 3.1 尺寸 Dimension (mm)

A	B	C	D	E※
6.1±0.2	6.8±0.2	2.6±0.2	0.5±0.02	70±2
5.1±0.2	5.4±0.2	2.4±0.2	0.5±0.02	50±2

长度可按客户要求制作

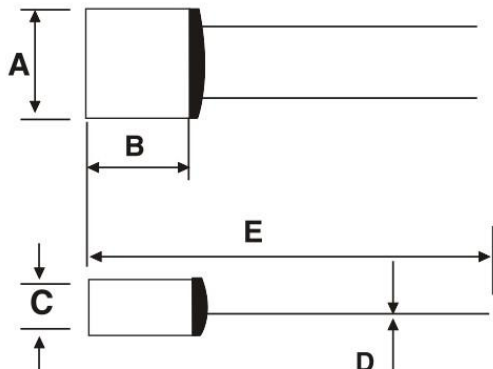
Length can be customized on request

# 东莞市安伏特电子有限公司 DONGGUAN AMPFORT ELECTRONICS CO., LTD.

## 3.2 电参数 Electrical Performances

型号 P/N	额定动作温度 Rated operating temperature Tf(°C)	实际动作温度 Actual operating temperature (°C)	保持温度 Hold temperature Tc(°C)	极限温度 Limit temperature Tm(°C)	额定电压 Rated Voltage (V)	额定电流 Rated Current (A)	分断电流 Breaking current (A)	限时过载电 流 Limited time overload current (A)
Y01	75	72±1	55	130	250	3	4.5	45
Y02	76	73±1	55	130	250	3	4.5	45
Y03	80	75±2	58	130	250	3	4.5	45
Y05	85	80±2	62	130	250	3	4.5	45
Y06	90	85±2	65	130	250	3	4.5	45
Y07	95	90±1	68	130	250	3	4.5	45
Y08	98	96±1	70	130	250	3	4.5	45
Y09	100	97±1	72	130	250	3	4.5	45
Y10	102	98±1	72	150	250	3	4.5	45
Y11	103	99±2	73	150	250	3	4.5	45
Y12	105	100±2	75	150	250	3	4.5	45
Y18	110	105±1	80	150	250	3	4.5	45
Y20	115	111±2	87	150	250	3	4.5	45
Y28	120	115±1	90	150	250	3	4.5	45
Y30	125	121±2	95	150	250	3	4.5	45
Y32	126	121±2	95	150	250	3	4.5	45
Y33	127	122±2	96	150	250	3	4.5	45
Y35	130	126±1	102	150	250	3	4.5	45
Y36	133	130±1	103	150	250	3	4.5	45
Y38	135	130±1	105	150	250	3	4.5	45
Y39	136	131±1	105	150	250	3	4.5	45
Y46	140	136±1	110	160	250	3	4.5	45
Y48	145	140±1	114	180	250	3	4.5	45
Y50	150	146±1	120	180	250	3	4.5	45

## 4. Y 系列 5A 250V 方壳



### 4.1 尺寸 Dimension (mm)

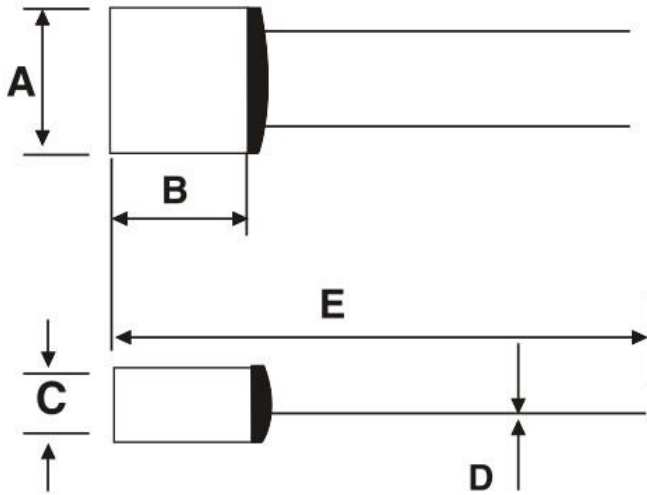
A	B	C	D	E※
8.5±0.5	8.0±0.2	3.5±0.2	0.58±0.05	45±2
长度可按客户要求制作 Length can be customized on request				

# 东莞市安伏特电子有限公司 DONGGUAN AMPFORT ELECTRONICS CO., LTD.

## 4.2 电参数 Electrical Performances

型号 P/N	额定动作温度 Rated operating temperature Tf(°C)	实际动作温度 Actual operating temperature (°C)	保持温度 Hold temperature Tc(°C)	极限温度 Limit temperature Tm(°C)	额定电压 Rated Voltage (V)	额定电流 Rated Current (A)
Y10	102	98±1	72	150	250	5
Y20	115	111±2	87	150	250	5
Y30	125	121±2	95	150	250	5
Y35	130	126±2	102	150	250	5
Y50	150	146±2	120	180	250	5

## 5. Y 系列 10A 250V 方壳



### 5.1 尺寸 Dimension (mm)

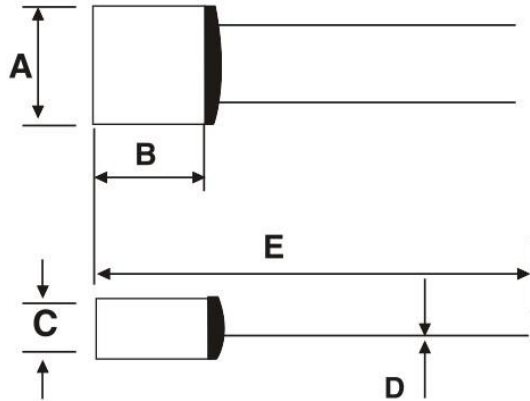
A	B	C	D	E※
8.5±0.5	8.0±0.2	3.5±0.2	1.0±0.05	45±2
长度可按客户要求制作 Length can be customized on request				

## 5.2 电参数 Electrical Performances

型号 P/N	额定动作温度 Rated operating temperature Tf(°C)	实际动作温度 Actual operating temperature (°C)	保持温度 Hold temperature Tc(°C)	极限温度 Limit temperature Tm(°C)	额定电压 Rated Voltage (V)	额定电流 Rated Current (A)
Y10	102	98±1	72	150	250	10
Y20	115	111±2	87	150	250	10
Y30	125	121±2	95	150	250	10
Y35	130	126±1	102	150	250	10
Y50	150	146±2	120	180	250	10

**东莞市安伏特电子有限公司**  
**DONGGUAN AMPFORT ELECTRONICS CO., LTD.**

**6. Y 系列 15A 250V 方壳**



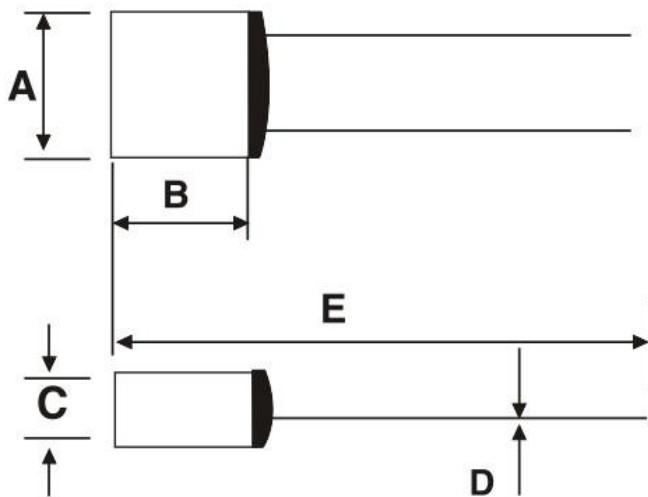
**6.1 尺寸 Dimension (mm)**

A	B	C	D	E※
8.5±0.5	8.0±0.2	3.5±0.2	1.0±0.05	45±2
长度可按客户要求制作 Length can be customized on request				

**6.2 电参数 Electrical Performances**

型号 P/N	额定动作温度 Rated operating temperature Tf(°C)	实际动作温度 Actual operating temperature (°C)	保持温度 Hold temperature Tc(°C)	极限温度 Limit temperature Tm(°C)	额定电压 Rated Voltage (V)	额定电流 Rated Current (A)
Y10	102	98±1	72	150	250	15
Y20	115	111±2	87	150	250	15
Y30	125	121±2	95	150	250	15
Y35	130	126±1	102	150	250	15
Y50	150	146±2	120	180	250	15

**7. Y 系列 20A 250V 方壳**



**7.1 尺寸 Dimension (mm)**

A	B	C	D	E※
11±0.5	12±0.2	4.9±0.2	1.2±0.05	45±2
长度可按客户要求制作 Length can be customized on request				

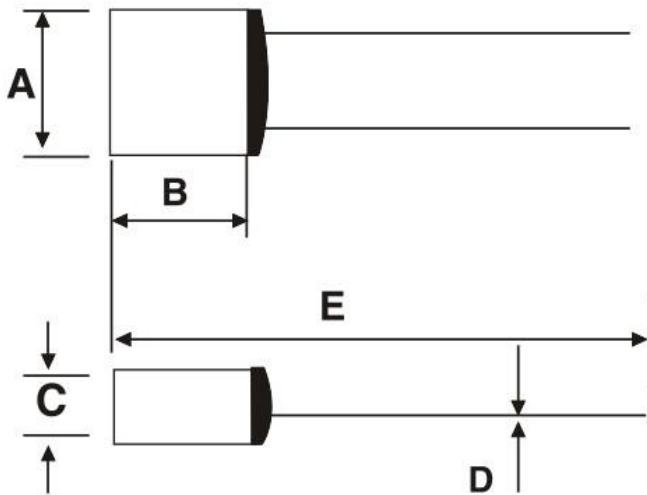


**东莞市安伏特电子有限公司**  
**DONGGUAN AMPFORT ELECTRONICS CO., LTD.**

**7.2 电参数 Electrical Performances**

型号 P/N	额定动作温度 Rated operating temperature Tf(°C)	实际动作温度 Actual operating temperature (°C)	保持温度 Hold temperature Tc(°C)	极限温度 Limit temperature Tm(°C)	额定电压 Rated Voltage (V)	额定电流 Rated Current (A)
Y10	102	98±1	72	150	250	20
Y20	115	111±1	87	150	250	20
Y30	125	121±2	95	150	250	20
Y35	130	126±1	102	150	250	20
Y50	150	146±2	120	180	250	20

**8. Y 系列 10KA250V 方壳**



**8.1 尺寸 Dimension (mm)**

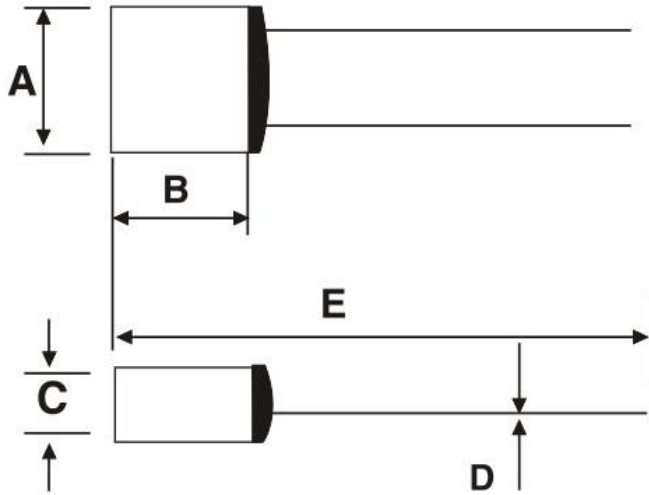
A	B	C	D	E※
8.5±0.5	6.8±0.2	3.5±0.2	0.8±0.05	45±2
长度可按客户要求制作 Length can be customized on request				

**8.2 电参数 Electrical Performances**

型号 P/N	额定动作温度 Rated operating temperature Tf(°C)	实际动作温度 Actual operating temperature (°C)	保持温度 Hold temperature Tc(°C)	极限温度 Limit temperature Tm(°C)	额定电压 Rated Voltage (V)	Max impulse current (A)
Y10	102	98±1	72	150	10	13000
Y20	115	111±1	87	150	10	13000
Y30	125	121±2	95	150	10	13000
Y35	130	126±2	102	150	10	13000
Y50	150	146±2	120	180	10	13000

**东莞市安伏特电子有限公司**  
**DONGGUAN AMPFORT ELECTRONICS CO., LTD.**

**9. Y 系列 20KA250V 方壳**



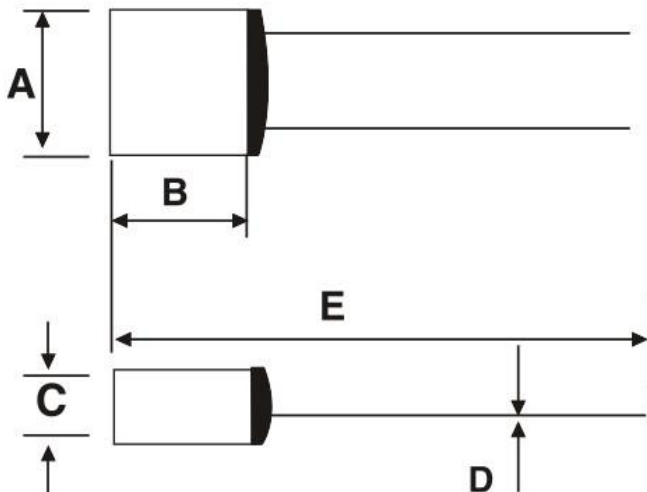
**9.1 尺寸 Dimension (mm)**

A	B	C	D	E※
11±0.5	12±0.2	4.9±0.2	1.2±0.05	45±2
长度可按客户要求制作 Length can be customized on request				

**9.2 电参数 Electrical Performances**

型号 P/N	额定动作温度 Rated operating temperature Tf(°C)	实际动作温度 Actual operating temperature (°C)	保持温度 Hold temperature Tc(°C)	极限温度 Limit temperature Tm(°C)	额定电压 Rated Voltage (V)	Max impulse current (A)
Y10	102	98±1	72	150	20	25000
Y20	115	111±1	87	150	20	25000
Y30	125	121±2	95	150	20	25000
Y35	130	126±1	102	150	20	25000
Y50	150	146±2	120	180	20	25000

**10. Y 系列 30KA250V 方壳**



**10.1 尺寸 Dimension (mm)**

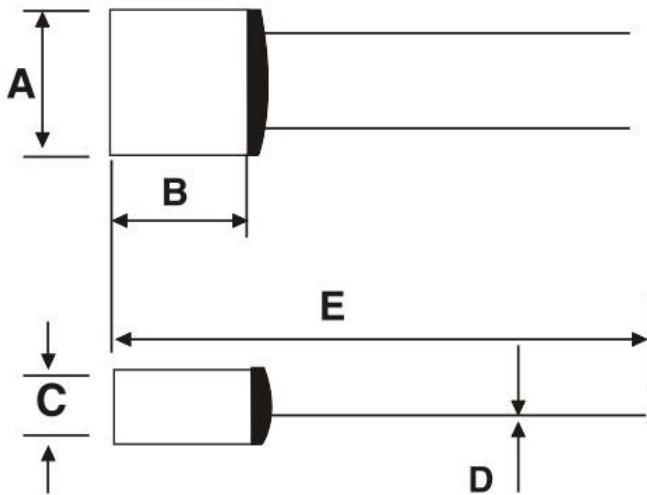
A	B	C	D	E※
12±0.5	12±0.2	5.2±0.2	1.5±0.01	45±2
长度可按客户要求制作 Length can be customized on request				

**东莞市安伏特电子有限公司**  
**DONGGUAN AMPFORT ELECTRONICS CO., LTD.**

**10.2 电参数 Electrical Performances**

型号 P/N	额定动作温度 Rated operating temperature Tf(°C)	实际动作温度 Actual operating temperature (°C)	保持温度 Hold temperature Tc(°C)	极限温度 Limit temperature Tm(°C)	额定电压 Rated Voltage (V)	Max impulse current (A)
Y10	102	98±1	72	150	30	33000
Y20	115	111±1	87	150	30	33000
Y30	125	121±2	95	150	30	33000
Y35	130	126±1	102	150	30	33000
Y50	150	146±2	120	180	30	33000

**11. Y 系列 40KA250V 方壳**



**11.1 尺寸 Dimension (mm)**

A	B	C	D	E※
12±0.5	12±0.2	5.2±0.2	1.8±0.01	45±2
长度可按客户要求制作 Length can be customized on request				

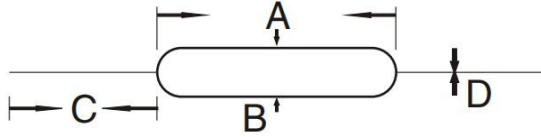
**11.2 电参数 Electrical Performances**

型号 P/N	额定动作温度 Rated operating temperature Tf(°C)	实际动作温度 Actual operating temperature (°C)	保持温度 Hold temperature Tc(°C)	极限温度 Limit temperature Tm(°C)	额定电压 Rated Voltage (V)	Max impulse current (A)
Y10	102	98±1	72	150	0	43000
Y20	115	111±1	87	150	40	43000
Y30	125	121±2	95	150	40	43000
Y35	130	126±1	102	150	40	43000
Y50	150	146±2	120	180	40	43000

**东莞市安伏特电子有限公司**  
**DONGGUAN AMPFORT ELECTRONICS CO., LTD.**

**12. DZ(1~3A)系列**

**12.1 尺寸 Dimension (mm)**



A	B	C	D
9±0.05	3±0.05	25±0.5	0.5±0.01

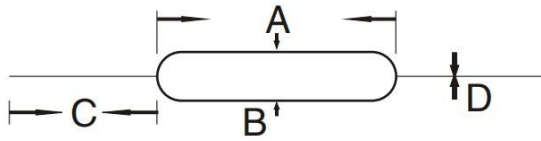
**12.2 电参数 Electrical Performances**

型号 P/N	额定动作温度 Rated operating temperature Tf(°C)	实际动作温度 Actual operating temperature (°C)	保持温度 Hold temperature Tc(°C)	极限温度 Limit temperature Tm(°C)	额定电压 Rated Voltage (V)	额定电流 Rated Current (A)	分断电流 Breaking current (A)	限时过载电流 Limited time overload current (A)
DZ-Y01	75	72±1	55	130	250	1A,2A,3A	1.5A,3A,4.5A	15A 30A 45A
DZ-Y02	76	73±1	55	130	250	1A,2A,3A	1.5A,3A,4.5A	15A 30A 45A
DZ-Y03	80	75±2	58	130	250	1A,2A,3A	1.5A,3A,4.5A	15A 30A 45A
DZ-Y05	85	80±2	62	130	250	1A,2A,3A	1.5A,3A,4.5A	15A 30A 45A
DZ-Y06	90	85±2	65	130	250	1A,2A,3A	1.5A,3A,4.5A	15A 30A 45A
DZ-Y07	95	90±1	68	130	250	1A,2A,3A	1.5A,3A,4.5A	15A 30A 45A
DZ-Y08	98	96±1	70	130	250	1A,2A,3A	1.5A,3A,4.5A	15A 30A 45A
DZ-Y09	100	97±1	72	130	250	1A,2A,3A	1.5A,3A,4.5A	15A 30A 45A
DZ-Y10	102	98±1	72	150	250	1A,2A,3A	1.5A,3A,4.5A	15A 30A 45A
DZ-Y11	103	99±2	73	150	250	1A,2A,3A	1.5A,3A,4.5A	15A 30A 45A
DZ-Y12	105	100±2	75	150	250	1A,2A,3A	1.5A,3A,4.5A	15A 30A 45A
DZ-Y18	110	105±1	80	150	250	1A,2A,3A	1.5A,3A,4.5A	15A 30A 45A
DZ-Y20	115	111±2	87	150	250	1A,2A,3A	1.5A,3A,4.5A	15A 30A 45A
DZ-Y28	120	115±1	90	150	250	1A,2A,3A	1.5A,3A,4.5A	15A 30A 45A
DZ-Y30	125	121±2	95	150	250	1A,2A,3A	1.5A,3A,4.5A	15A 30A 45A
DZ-Y32	126	121±2	95	150	250	1A,2A,3A	1.5A,3A,4.5A	15A 30A 45A
DZ-Y33	127	122±2	96	150	250	1A,2A,3A	1.5A,3A,4.5A	15A 30A 45A
DZ-Y35	130	126±1	102	150	250	1A,2A,3A	1.5A,3A,4.5A	15A 30A 45A
DZ-Y36	133	130±1	103	150	250	1A,2A,3A	1.5A,3A,4.5A	15A 30A 45A
DZ-Y38	135	130±1	105	150	250	1A,2A,3A	1.5A,3A,4.5A	15A 30A 45A
DZ-Y39	136	131±1	105	150	250	1A,2A,3A	1.5A,3A,4.5A	15A 30A 45A
DZ-Y46	140	136±1	110	160	250	1A,2A,3A	1.5A,3A,4.5A	15A 30A 45A
DZ-Y48	145	140±1	114	180	250	1A,2A,3A	1.5A,3A,4.5A	15A 30A 45A
DZ-Y50	150	146±1	120	180	250	1A,2A,3A	1.5A,3A,4.5A	15A 30A 45A

**东莞市安伏特电子有限公司**  
**DONGGUAN AMPFORT ELECTRONICS CO., LTD.**

**13. DZ 5A 系列**

**13.1 尺寸 Dimension (mm)**



A	B	C	D
9.0±0.05	3.0±0.05	25±0.5	0.6±0.01

**12.2 电参数 Electrical Performances**

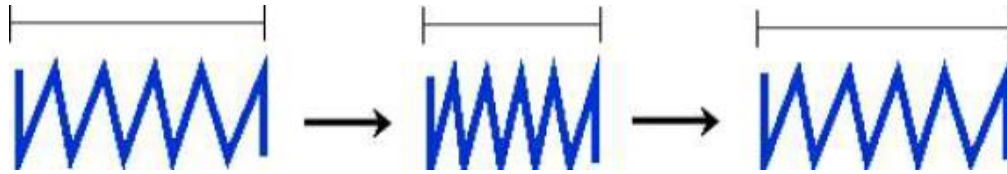
型号 P/N	额定动作温度 Rated operating temperature Tf(°C)	实际动作温度 Actual operating temperature (°C)	保持温度 Hold temperature Tc(°C)	极限温度 Limit temperature Tm(°C)	额定电压 Rated Voltage (V)	额定电流 Rated Current (A)	分断电流 Breaking current (A)	限时过载电流 Limited time overload current (A)
DZ5-Y01	75	72±1	55	130	250	5A	7.5	75A
DZ5-Y02	76	73±1	55	130	250	5A	7.5	75A
DZ5-Y03	80	75±2	58	130	250	5A	7.5	75A
DZ5-Y05	85	80±2	62	130	250	5A	7.5	75A
DZ5-Y06	90	85±2	65	130	250	5A	7.5	75A
DZ5-Y07	95	90±1	68	130	250	5A	7.5	75A
DZ5-Y08	98	96±1	70	130	250	5A	7.5	75A
DZ5-Y09	100	97±1	72	130	250	5A	7.5	75A
DZ5-Y10	102	98±1	72	150	250	5A	7.5	75A
DZ5-Y11	103	99±2	73	150	250	5A	7.5	75A
DZ5-Y12	105	100±2	75	150	250	5A	7.5	75A
DZ5-Y18	110	105±1	80	150	250	5A	7.5	75A
DZ5-Y20	115	111±2	87	150	250	5A	7.5	75A
DZ5-Y28	120	115±1	90	150	250	5A	7.5	75A
DZ5-Y30	125	121±2	95	150	250	5A	7.5	75A
DZ5-Y32	126	121±2	95	150	250	5A	7.5	75A
DZ5-Y33	127	122±2	96	150	250	5A	7.5	75A
DZ5-Y35	130	126±1	102	150	250	5A	7.5	75A
DZ5-Y36	133	130±1	103	150	250	5A	7.5	75A
DZ5-Y38	135	130±1	105	150	250	5A	7.5	75A
DZ5-Y39	136	131±1	105	150	250	5A	7.5	75A
DZ5-Y46	140	136±1	110	160	250	5A	7.5	75A
DZ5-Y48	145	140±1	114	180	250	5A	7.5	75A
DZ5-Y50	150	146±1	120	180	250	5A	7.5	75A

# 东莞市安伏特电子有限公司

## DONGGUAN AMPFORT ELECTRONICS CO., LTD.

反复记忆合金保险丝 Repeated memory alloy fuse

反复记忆合金保险丝的工作原理 The working principle of repeated memory alloy fuse (RTF)



加热时弹簧回复  
和加热处理  
Processing spring  
shape and heat  
treatment

常温下冷却和组  
装 Cooling and  
assembly at room  
temperature

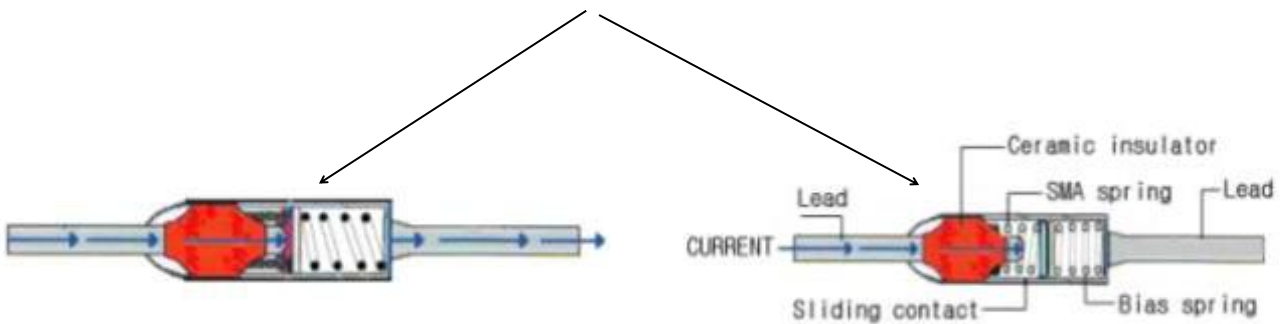
加热时弹簧回复  
Spring returns  
when heated



动作前  
连接线路

形状记忆合金弹簧  
Shape memory alloy  
spring

动作前  
断路



RTF Repeatabe Thermal Fuse 形状记忆合金

- 形状记忆效果和形状记忆合金 Shape memory effect and shape memory alloy (SMA:Shape Memory Alloy)

称为形状记忆合金是钛和镍的合金，具体的说，被物理的冲击为变成形状，任何的温度下会回复到原来的形状的变态力。这个变态力依靠钛和镍都含量不一样，利用这样的性质可作为 70 度以上的 RTF.

The so-called shape memory alloy is an alloy of titanium and nickel. Specifically, it is transformed into a shape by a physical impact and will return to its original shape at any temperature. This metamorphic force depends on the different content of titanium and nickel. Using this property, it can be used as an RTF above 70 degrees.

- RTF 是应用形状记忆合金的素材的电子电气零部件  
RTF is an electronic and electrical component using shape memory alloy materials

# 东莞市安伏特电子有限公司 DONGGUAN AMPFORT ELECTRONICS CO., LTD.

## 形状记忆效果 Shape memory effect



应用形状记忆合金做弹簧形状  
加工和热处理 Application of  
shape memory alloy for spring  
shape processing and heat  
treatment

人为地变形  
Artificially  
deformed

加热转移温  
度 Heating  
transfer  
temperature

记忆起来的相  
撞回复  
Collision reply

## 温度操作特性测试资料 ( 过热熔断特性)

### Temperature operating characteristic test data (overheating cut-off characteristic)

测试型号: 导脚形-MST-L-02-75 2A, 57 °C

Test model: Lead-shaped-MST-L-02-75 2A, 57 °C

型号 Model	1次 1 time		2次 2 times		3次 3 times		4次 4 times		5次 5 times		6次 6 times		7次 7 times		8次 8 times		9次 9 times		10次 10 times		平均 Avg.	
	操作 OP	复 归 Re	操 作 OP	复 归 Re	操 作 OP	复 归 Re	操 作 OP	复 归 Re	操 作 OP	复 归 Re	操 作 OP	复 归 Re	操 作 OP	复 归 Re	操 作 OP	复 归 Re	操 作 OP	复 归 Re	操 作 OP	复 归 Re	操 作 OP	复 归 Re
MST-L-02-75-1	74	53	75	52	73	50	74	51	73	50	74	48	75	51	73	49	75	52	73	49	74	48
MST-L-02-75-2	72	48	71	49	73	49	73	50	71	48	73	50	73	49	73	47	73	49	72	48	72	50
MST-L-02-75-3	73	47	73	48	72	46	73	48	72	47	72	49	74	50	74	48	73	46	73	49	73	49
MST-L-02-75-4	73	49	74	48	73	49	75	48	73	48	72	48	72	48	74	48	74	48	73	47	73	46
MST-L-02-75-5	74	48	73	49	74	48	73	49	73	49	75	47	75	49	72	50	73	47	73	51	74	49
MST-L-02-75-6	73	48	73	50	73	51	73	50	74	47	74	48	74	48	74	51	75	50	73	49	74	50
MST-L-02-75-7	74	51	74	50	74	50	72	49	73	46	74	47	74	47	73	49	73	48	75	48	74	49
MST-L-02-75-8	72	47	73	48	72	47	73	48	71	47	73	48	73	46	73	47	71	49	71	48	72	47
MST-L-02-75-9	72	48	73	47	72	48	72	47	71	48	73	49	72	47	73	46	72	46	72	50	72	48
MST-L-02-75-10	73	47	73	48	73	49	74	48	72	47	72	48	74	47	73	48	72	47	74	48	73	46

# 东莞市安伏特电子有限公司 DONGGUAN AMPFORT ELECTRONICS CO., LTD.

电流操作特性测试 ( 过电流掐断特性)

Current operating characteristic test (overcurrent pinch characteristic)

测试型号: 导脚形-M S T -L-02-75 2A,57℃

Test model: Lead-shaped-MST-L-02-75 2A, 57 °C

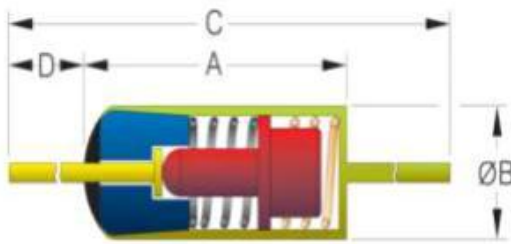
型号 Model	1次 1 time		2次 2 times		3次 3 times		4次 4 times		5次 5 times		6次 6 times		7次 7 times		8次 8 times		9次 9 times		10次 10 times		平均 Avg.	电压	
	正 常 Nor.	掐 断 Cut.	正 常 Nor.	掐 断 Cut.	正 常 Nor.	掐 断 Cut.	正 常 Nor.	掐 断 Cut.	正 常 Nor.	掐 断 Cut.	正 常 Nor.	掐 断 Cut.	正 常 Nor.	掐 断 Cut.	正 常 Nor.	掐 断 Cut.	正 常 Nor.	掐 断 Cut.	正 常 Nor.	掐 断 Cut.	正 常 Nor.		掐 断 Cut.
	MST-L-02-75-1	2	5	2	5	2	5	2	5	2	5	2	5	2	5	2	5	2	5	2	5		2
MST-L-02-75-2	2	5	2	5	2	5	2	5	2	5	2	5	2	5	2	5	2	5	2	5	2	5	12V
MST-L-02-75-3	2	5	2	5	2	5	2	5	2	5	2	5	2	5	2	5	2	5	2	5	2	5	12V
MST-L-02-75-4	2	5	2	5	2	5	2	5	2	5	2	5	2	5	2	5	2	5	2	5	2	5	12V
MST-L-02-75-5	2	5	2	5	2	5	2	5	2	5	2	5	2	5	2	5	2	5	2	5	2	5	12V
MST-L-02-75-6	2	5	2	5	2	5	2	5	2	5	2	5	2	5	2	5	2	5	2	5	2	5	12V
MST-L-02-75-7	2	5	2	5	2	5	2	5	2	5	2	5	2	5	2	5	2	5	2	5	2	5	12V
MST-L-02-75-8	2	5	2	5	2	5	2	5	2	5	2	5	2	5	2	5	2	5	2	5	2	5	12V
MST-L-02-75-9	2	5	2	5	2	5	2	5	2	5	2	5	2	5	2	5	2	5	2	5	2	5	12V
MST-L-02-75-10	2	5	2	5	2	5	2	5	2	5	2	5	2	5	2	5	2	5	2	5	2	5	12V

## 反复性 (可恢复) 温度保险丝产品规格

### Repeatability (recoverable) thermal fuse product specifications

#### 1)金属壳系列 Metal shell series

产品尺寸图 Dimensional Drawing (Unit:mm)



电流 Current (A)	A	B	C	D	备注 Mark
1~8	6	2.5	60	27	A,C,D 可调整 A,C,D customized
8~10	6	3.0	60	27	
10~20	10	3.5	60	25	
≥30	10	4.0	60	25	



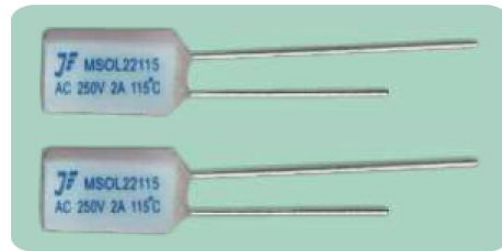
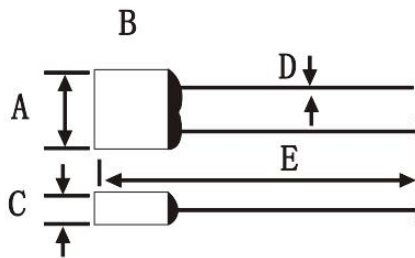
**东莞市安伏特电子有限公司**  
**DONGGUAN AMPFORT ELECTRONICS CO., LTD.**

产品规格 Specification

型号 Model	操作温度 Tf	输入电流/电压 Input I/V	前期阻抗 Prophase impedance	后期阻抗 Later impedance	复位温度 Reset Temperature
MST-L-02	75, 95, 115 ±5 °C	2A/12V	10~30mΩ	10~30mΩ	Tf - 20°C
MST-L-05	75, 95, 115 ±5 °C	5A/220V	10~30mΩ	10~30mΩ	Tf - 20°C
MST-L-10	75, 95, 115 ±5 °C	10A/220V	5~30mΩ	5~30mΩ	Tf - 20°C
MST-L-20	75, 95, 115 ±5 °C	20A/220V	5~30mΩ	5~30mΩ	Tf - 20°C

**2)PBT 方型系列 PBT Square Series**

产品尺寸图 Dimensional Drawing (Unit:mm)



电流 Current(A)	A	B	C	D	E
1	5.4±0.1	10.1±0.1	3.5±0.1	0.6±0.02	15±5
2	5.4±0.1	10.1±0.1	3.5±0.1	0.6±0.02	15±5
3	5.4±0.1	10.1±0.1	3.5±0.1	0.6±0.02	15±5

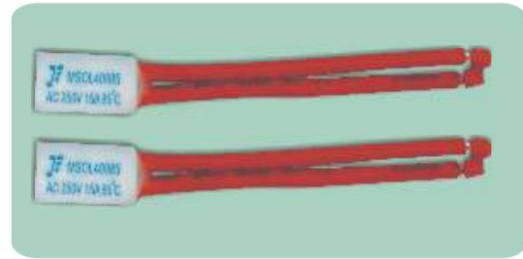
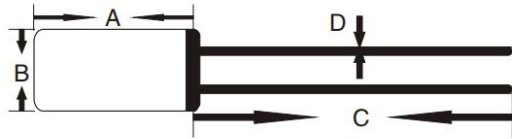
产品规格 Specification

型号 Model	操作温度 Tf	输入电流/电压 Input I/V	前期阻抗 Prophase impedance	后期阻抗 Later impedance	复位温度 Reset Temperature
MST-01	75, 95, 115 ±5 °C	1A/12V 250V	10~30mΩ	10~30mΩ	Tf - 20°C
MST-02	75, 95, 115 ±5 °C	1A/12V 250V	10~30mΩ	10~30mΩ	Tf - 20°C
MST-03	75, 95, 115 ±5 °C	3A/12V 250V	10~30mΩ	10~30mΩ	Tf - 20°C

# 东莞市安伏特电子有限公司 DONGGUAN AMPFORT ELECTRONICS CO., LTD.

## 3)陶瓷壳系列 Ceramic Shell Series

产品尺寸图 Dimensional Drawing (Unit:mm)



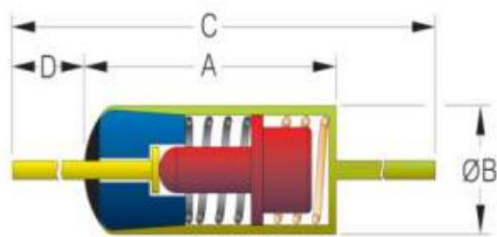
电流 Current(A)	A	B	C	D	备注
15~20	23	10	90	3.0	A,B,C,D 可调整 A,B,C,D customized

产品规格 Specification

型号 Model	操作温度 Tf	输入电流/电压 Input I/V	前期阻抗 Prophase impedance	后期阻抗 Later impedance	复位温度 Reset Temperature
MST-15	75, 95, 105, 115, 125 ±5 °C	15A/220V	5~30mΩ	5~30mΩ	Tf - 20 °C
MST-20	75, 95, 105, 115, 125 ±5 °C	20A/220V	5~30mΩ	5~30mΩ	Tf - 20 °C

## 4)陶瓷壳系列 Ceramic Shell Series

产品尺寸图 Dimensional Drawing (Unit:mm)



电流 Current(A)	A	B	C	D	Diameter
1~3	10	4	60	25	Ø0.6

产品规格 Specification

型号 Model	操作温度 Tf	输入电流/电压 Input I/V	前期阻抗 Prophase impedance	后期阻抗 Later impedance	复位温度 Reset Temperature
MST-01	75, 95, 115	1A/12V 250V	10~30mΩ	10~30mΩ	Tf - 20 °C

**东莞市安伏特电子有限公司**  
**DONGGUAN AMPFORT ELECTRONICS CO., LTD.**

	±5 °C				
MST-02	75, 95, 115 ±5 °C	2A/12V 250V	10~30mΩ	10~30mΩ	Tf - 20 °C
MST-03	75, 95, 115 ±5 °C	3A/12V 250V	10~30mΩ	10~30mΩ	Tf - 20 °C